



GARDEN GIFTS



Fabric Collection by **Gil-Jin Foster**



FREE PATTERN
Ask for our fabrics
in your local
independent
quilt shop!

Gardening Time quilt by Elizabeth Allocco

Size: 57" x 37"



pbtex.com

GARDENING TIME

Quilt by Elizabeth Allocco using the *Garden Gifts* fabric collection
by Gil-Jin Foster for P&B Textiles

Size: 57" x 37"

YARDAGE

| | | |
|-------------|-------------------|----------|
| GGIF 620 E | Panel | 1 panel |
| GGIF 621 B | Blue Butterflies | 1/4 yard |
| GGIF 621 E | Cream Butterflies | 1/4 yard |
| GGIF 622 C | Purple Patchwork | 1/4 yard |
| GGIF 622 B | Red Patchwork | 1/4 yard |
| GGIF 623 RO | Red Border Print | 3/4 yard |
| GGIF 624 B | Blue Flowers | 1/4 yard |
| GGIF 624 RO | Red Flowers | 3/4 yard |
| GGIF 624 Y | Yellow Flowers | 1/4 yard |
| GGIF 625 B | Blue Birds | 1/4 yard |
| GGIF 625 E | Cream Birds | 1/4 yard |
| GGIF 626 C | Purple Stripe | 1/4 yard |
| GGIF 626 G | Green Stripe | 1/4 yard |
| BACKING | Any GGIF fabric | 2 yards |

CUTTING

Cut strips across the width of fabric (wof), unless otherwise indicated.

Panel (620 E), trim to:

- 43 1/2" x 23 1/2" (trimming 1" from the green blocks border on each end and 1/4" from the green blocks border on the top and bottom edges)

Red Flowers (624 RO), cut:

- (4) 1 1/2" x wof inner-border strips
- (2) 1 1/2" x wof strips; cut into (10) 1 1/2" x 6 1/2" rectangles
- (5) 2 1/2" x wof binding strips

Red Border Print (623 RO), fussy cut:

- (1) 6 1/2" x 18 1/2" section of watering cans with purple flowers at top
- (1) 6 1/2" x 18 1/2" section of watering cans with purple flowers at bottom
- (1) 6 1/2" x 12 1/2" section of watering cans with purple flowers at bottom
- (4) 1 1/2" x 27" strips of orange and yellow flowers

Blue Butterflies (621 B), cut:

- (1) 6 1/2" square

Cream Butterflies (621 E), cut:

- (1) 6 1/2" square

Blue Birds (625 B), cut:

- (1) 6 1/2" square
- (3) 3 1/2" squares

Blue Flowers (624 B), cut:

- (11) 3 1/2" squares

Purple Patchwork (622 C), **Yellow Flowers (624 Y)**, and **Purple Stripe (626 C)**, from *each* cut:

- (9) 3 1/2" squares (27 total)

Cream Birds (625 E) and **Red Patchwork (622 B)**, from *each* cut:

- (7) 3 1/2" squares (14 total)

Green Stripe (626 G), cut:

- (5) 3 1/2" squares



ASSEMBLY

1. Sew two Border Print 1 1/2" x 27" flower strips end to end to make a long strip. Make two long strips and trim them to measure 43 1/2". Sew the trimmed strips to the top and bottom edges of the panel so that it measures 43 1/2" x 25 1/2".

2. Join the Red Flowers 1 1/2"-wide strips in pairs to make two long strips. From each long strip, cut one 25 1/2"-long strip and one 51 1/2"-long strip. Sew the shorter strips to the left and right sides of the panel.

3. Referring the photo as a placement guide, lay out the pieced borders. The borders are assembled and then stitched to the quilt center using a partial seam. (Note that the four squares in the upper-right corner are part of the right-side border and the four squares in the lower-left corner are part of the left-side border.) Join the pieces in the top and bottom borders. Sew a Red Flowers 51 1/2"-long strip to the bottom edge of the top border and the top edge of the bottom border.

4. Join the pieces in the left and right borders.

5. Sew the top border to the quilt top, stopping about 3" from the left edge of the quilt center with a backstitch. Sew the right-side border to the quilt center. Add the bottom border and then the left-side border. After adding the last strip, sew the open section of the top border closed.

6. Layer the quilt top with batting and backing; baste. Quilt as desired. Using the Red Flowers 2 1/2"-wide strips, bind the edges to finish.



ASSEMBLY DIAGRAM

GARDEN GIFTS

Fabric Collection by Gil-Jin Foster



GGIF 620 E • selvage to selvage • 24" repeat



GGIF 623 B



GGIF 622 B



GGIF 622 C



GGIF 623 RO



GGIF 625 B



GGIF 625 E



GGIF 621 B



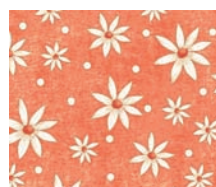
GGIF 621 E



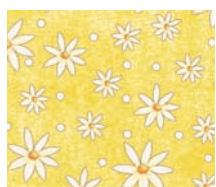
GGIF 621 G



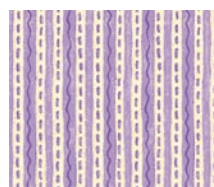
GGIF 624 B



GGIF 624 RO



GGIF 624 Y



GGIF 626 C



GGIF 626 G



GGIF 626 RO

P&B Textiles ♦ 1580 Gilbreth Road, Burlingame, CA 94010 ♦ 800-852-2327

For wholesale orders: 14683 Midway Road, Addison, TX 75001 ♦ 800-351-9087 ♦ www.pbtex.com



100% cotton ♦ Cold wash & dry ♦ 43"/44" ♦ Colors may vary due to printing process ♦ 11/11
Panel shown selvage to selvage. 623 shown at 13%. All other fabrics shown at 50% scale.